

Undergraduate Programs



ADMISSION STATISTICS - (2019-20)

TABLE OF CONTENTS

Introduction.....	2
Applications	3
Gender.....	4
Course	5
Region	8
Religion.....	9
Marks.....	11
Mark distribution with respect to gender.....	14
Mark distribution with respect to Religion section.....	15
Mark distribution with respect to Course.....	16
Differently abled students.....	17
Demand for Courses.....	18
Admissions	20
Gender.....	20
Course	21
Region	23
Religion.....	24
Marks.....	26
Mark distribution with respect to gender.....	29
Mark distribution with respect to Religion section.....	30
Mark distribution with respect to Course.....	31
Differently abled students.....	33

INTRODUCTION

The following tables and charts are produced annually and are intended to provide a statistical analysis of applicants to the Christ College Autonomous, Irinjalakuda. The report gives a detailed breakdown of those who applied to Christ College and got admitted in the year 2019. The AISHE report of 2017-18 is made reference to check the status of applications and admissions in the national level (https://mhrd.gov.in/sites/upload_files/mhrd/files/statistics-new/AISHE2017-18.pdf). We analyze the applications by gender, academic achievement, region, disability and reservation category. This is an effort to study the background of our students and to demonstrate our commitment to transparency. The inequalities of our society, particularly the academic achievement of SC/ST students are immediately apparent from the statistics. The report gave us a chance for introspection towards the commitment to education of weaker sections of society.

This year 1248 vacancies were filled; and our college has a distribution of 21.8% of Commerce students, 29.5% of arts and Social Science and 48.5% of Science students. AISHE report indicates enrollment to science stream as 17%. From the inception of the College, we have been dedicated to impart science education to society. The enrollment of SC, ST and OBC students this year were 11.46%, 1.28% and 16.35% respectively; which are much below the national level figures (14.4%, 5.2% & 35.0%). We invite everyone who reads this report to help us attract more academically motivated students of all backgrounds to apply to Christ College.

The data has been prepared by Internal Quality Assurance Cell (IQAC) of Christ College. (E mail: igacchristijk@gmail.com)

Notes for Information: -

These statistics refer to applications and admissions during the academic year 2019-20 of Christ College (Autonomous), Irinjalakuda. Percentages throughout have been rounded to one/two decimal place, so values given may not always add up to 100

APPLICATIONS

Student Applications (UG 2019)		
Females	3762	57.78%
Males	2748	42.21%
Transgender	1	0.02%
Grand total	6511	100.00%

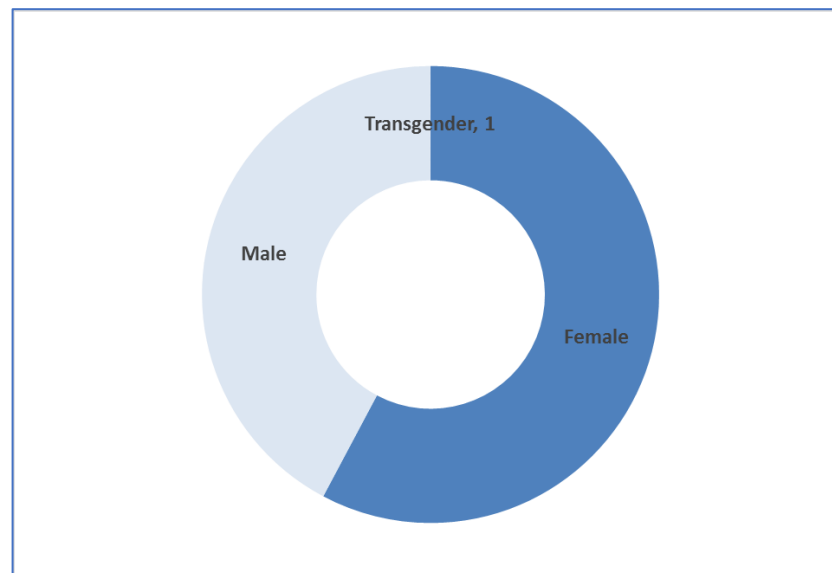


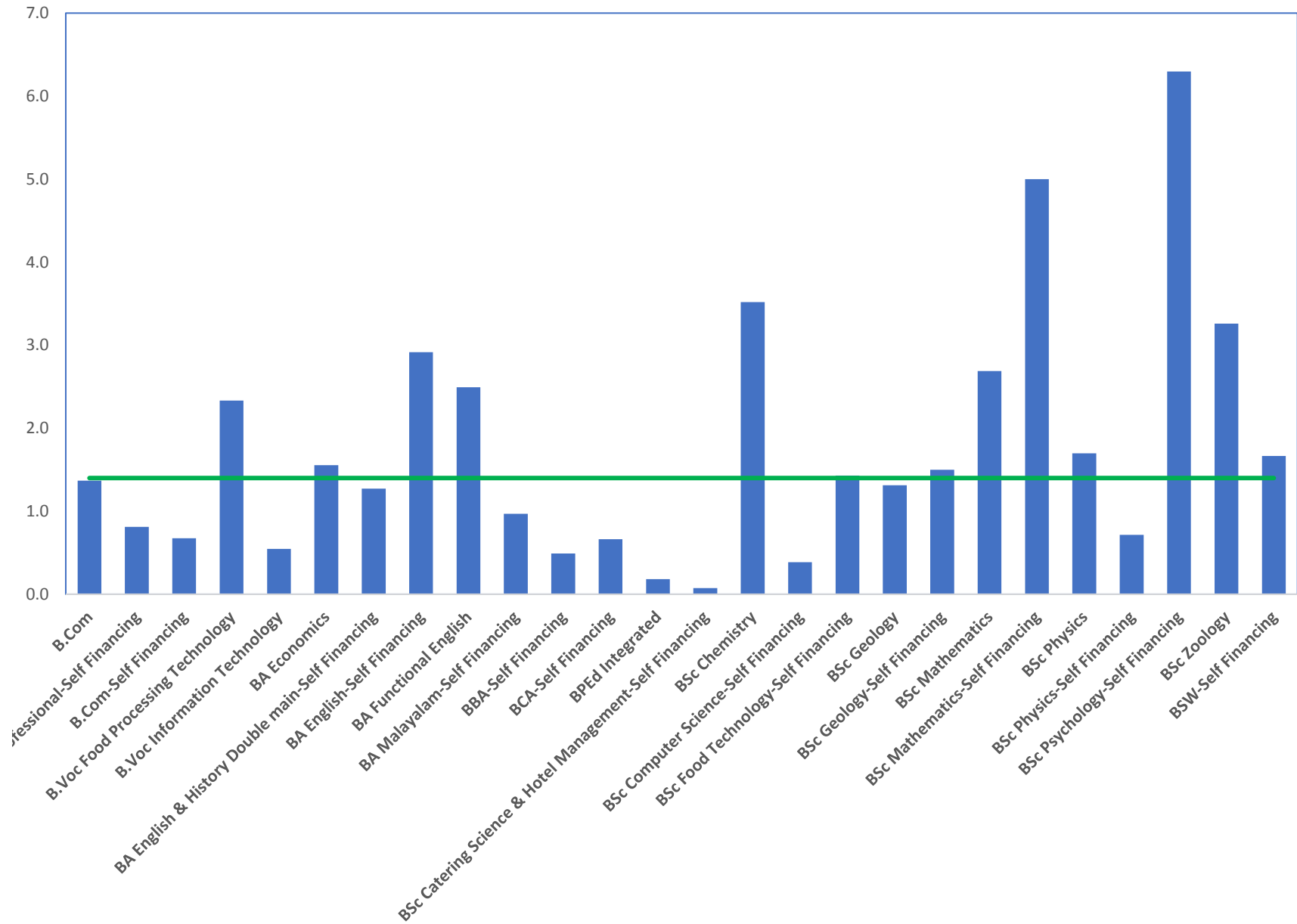
Table and Chart showing applicants gender

Out of the twenty six courses; females preference were high for twelve courses. Each year high number of students apply for B.Sc Psychology course. This year B.Sc chemistry and B.Sc Mathematics were also preferred by female students. Courses less preferred by females were B.Sc Catering Science, BPEd, BCA and B.Sc Computer Science. In total 1.4 females applied per male student.

COURSE

Course	Female	Male	Female/Male
B.Com	751	549	1.4
B.Com Professional-Self Financing	43	53	0.8
B.Com-Self Financing	99	147	0.7
B.Voc Food Processing Technology	42	18	2.3
B.Voc Information Technology	12	22	0.5
BA Economics	171	110	1.6
BA English & History Double main-Self Financing	56	44	1.3
BA English-Self Financing	105	36	2.9
BA Functional English	192	77	2.5
BA Malayalam-Self Financing	32	33	1.0
BBA-Self Financing	76	155	0.5
BCA-Self Financing	93	140	0.7
BPEd Integrated	72	394	0.2
BSc Catering Science & Hotel Management-Self Financing	4	54	0.1
BSc Chemistry	426	121	3.5
BSc Computer Science-Self Financing	43	111	0.4
BSc Food Technology-Self Financing	83	58	1.4
BSc Geology	130	99	1.3
BSc Geology-Self Financing	12	8	1.5
BSc Mathematics	258	96	2.7
BSc Mathematics-Self Financing	5	1	5.0
BSc Physics	336	198	1.7
BSc Physics-Self Financing	10	14	0.7

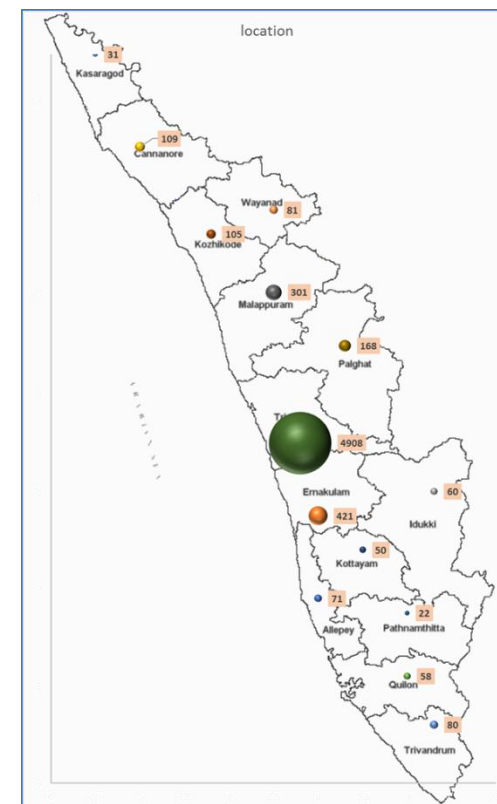
BSc Psychology-Self Financing	233	37	6.3
BSc Zoology	388	119	3.3
BSW-Self Financing	90	54	1.7
total	3762	2748	1.4



REGION

State	No of applications
Bihar	1
Gujarat	1
Haryana	1
Karnataka	1
Kerala	6466
Lakshadweep	13
Maharashtra	3
New Delhi	4
Pondicherry	8
Tamilnadu	6
Uttar Pradesh	2
West Bengal	2
total	6508
Three candidates applied from other countries	
i) Qatar, ii) Baharin, iii) Saudi Arabia	

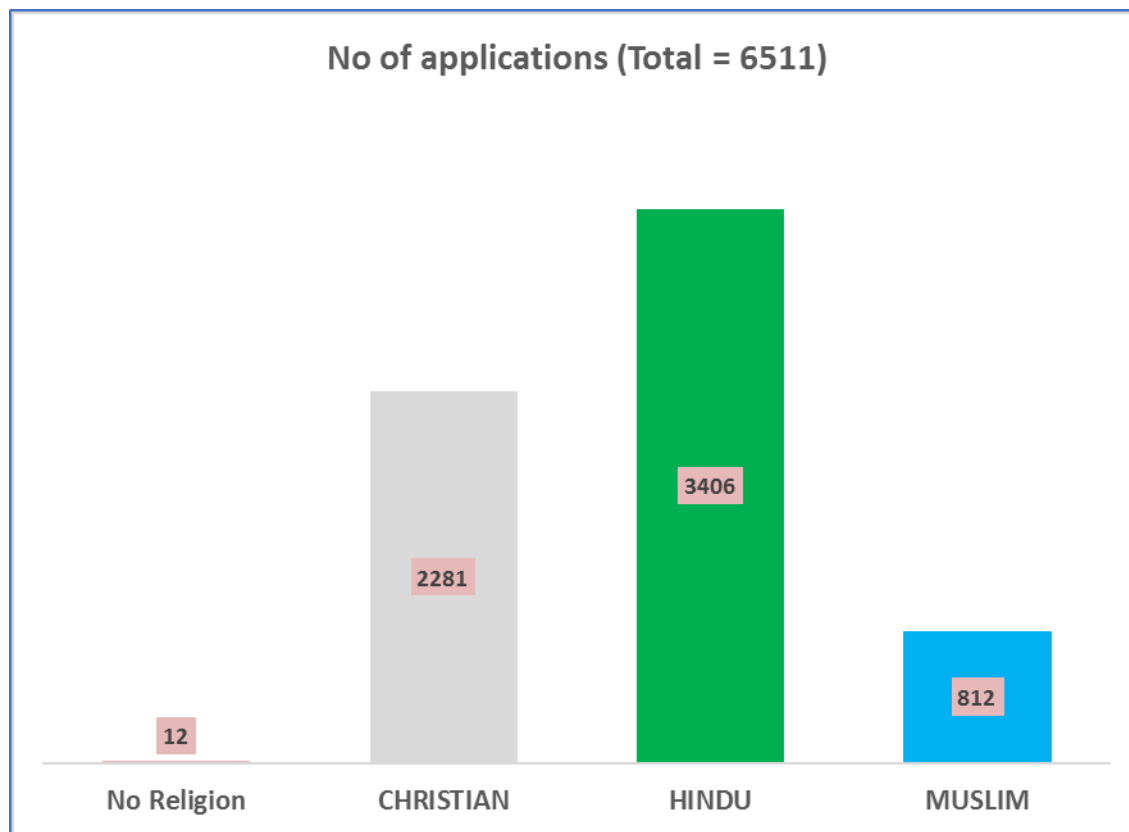
Districts	No of applications
Alappuzha	71
Ernakulam	421
Idukki	60
Kannur	109
Kasargod	31
Kollam	58
Kottayam	50
Kozhikode	105
Malappuram	301
Palakkad	168
Pathanamthitta	22
Thrissur	4908
Trivandrum	81
Wayanad	82
Grand Total	6385



Each year Christ College attracts applicants from all parts of Kerala. As indicated in the map; most of our students are from Northern district of Kerala.

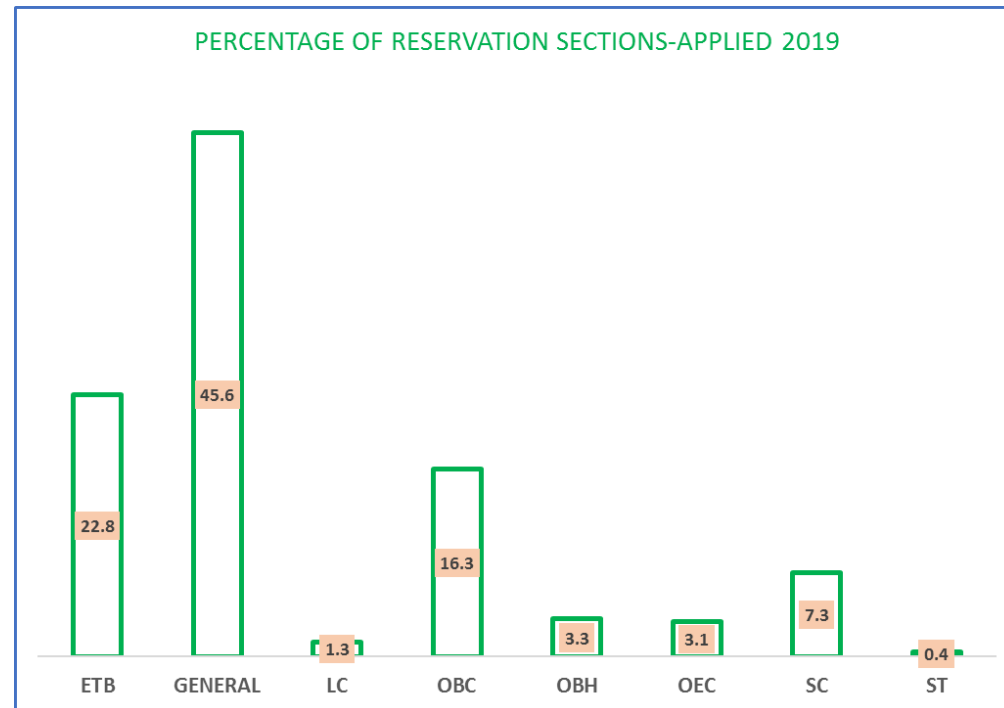
RELIGION

Religion	No of applications
No Religion	12
CHRISTIAN	2281
HINDU	3406
MUSLIM	812
Grand Total	6511



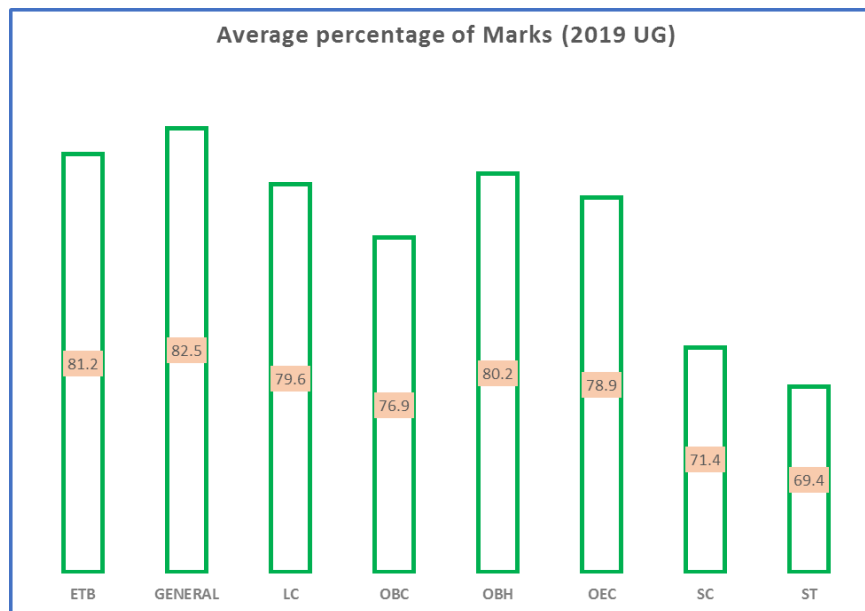
SECTION	COUNT	PERCENTAGE
ETB	1484	22.8
GENERAL	2969	45.6
LC	82	1.3
OBC	1064	16.3
OBH	214	3.3
OEC	199	3.1
SC	473	7.3
ST	26	0.4
total	6511	100

CATEGORY	CHRISTIAN	HINDU	MUSLIM	NO RELIGION	TOTAL
ETB	0	1484	0	0	1484
GENERAL	2121	817	25	6	2969
LC	82	0	0	0	82
OBC	69	215	774	6	1064
OBH	0	214	0	0	214
OEC	8	191	0	0	199
SC	1	472	0	0	473
ST	0	13	13	0	26



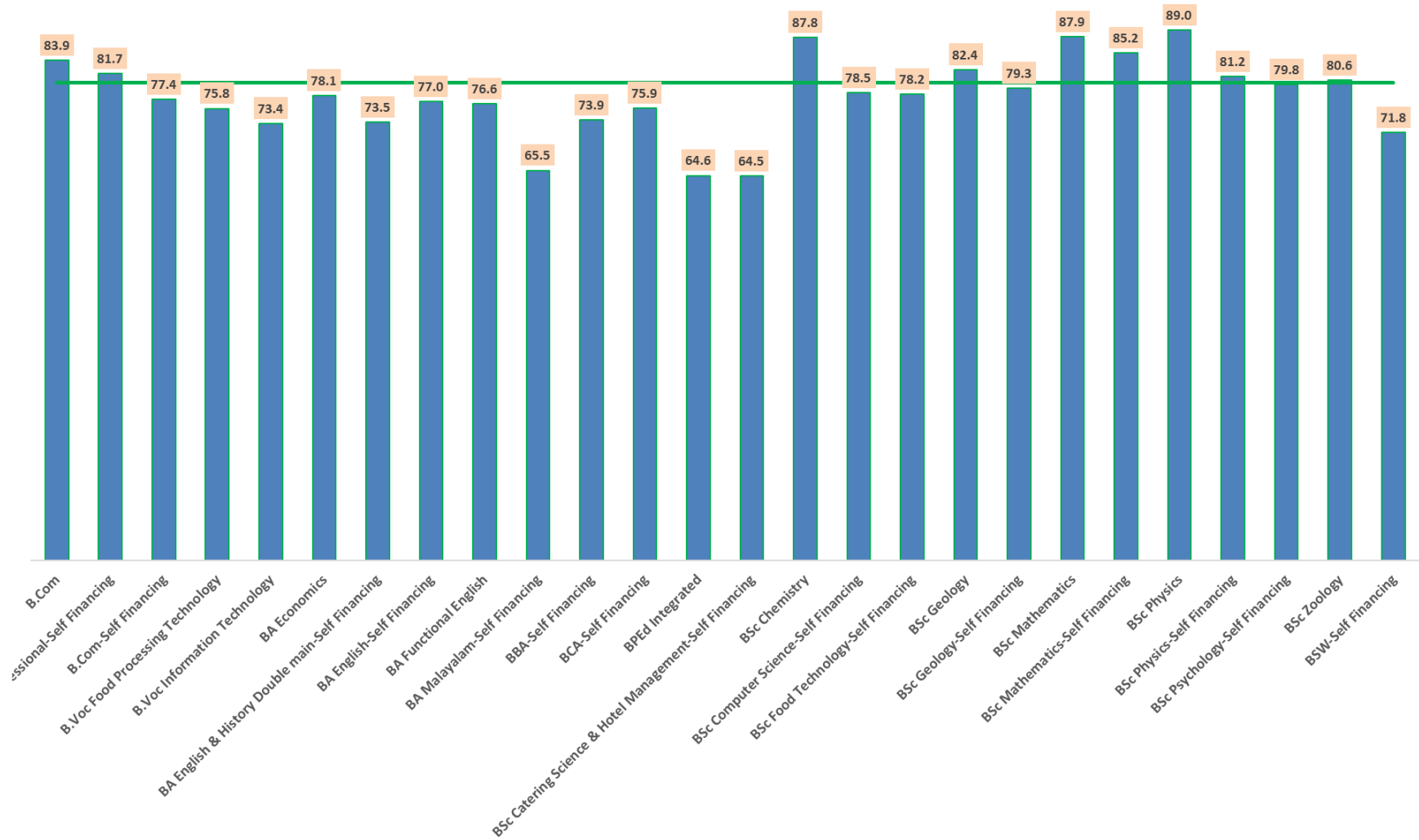
Average of percentage marks-applicants- (2019 UG)	
FEMALE	84.0
MALE	75.0
TRANS GENDER	82.5
Grand Total	80.5

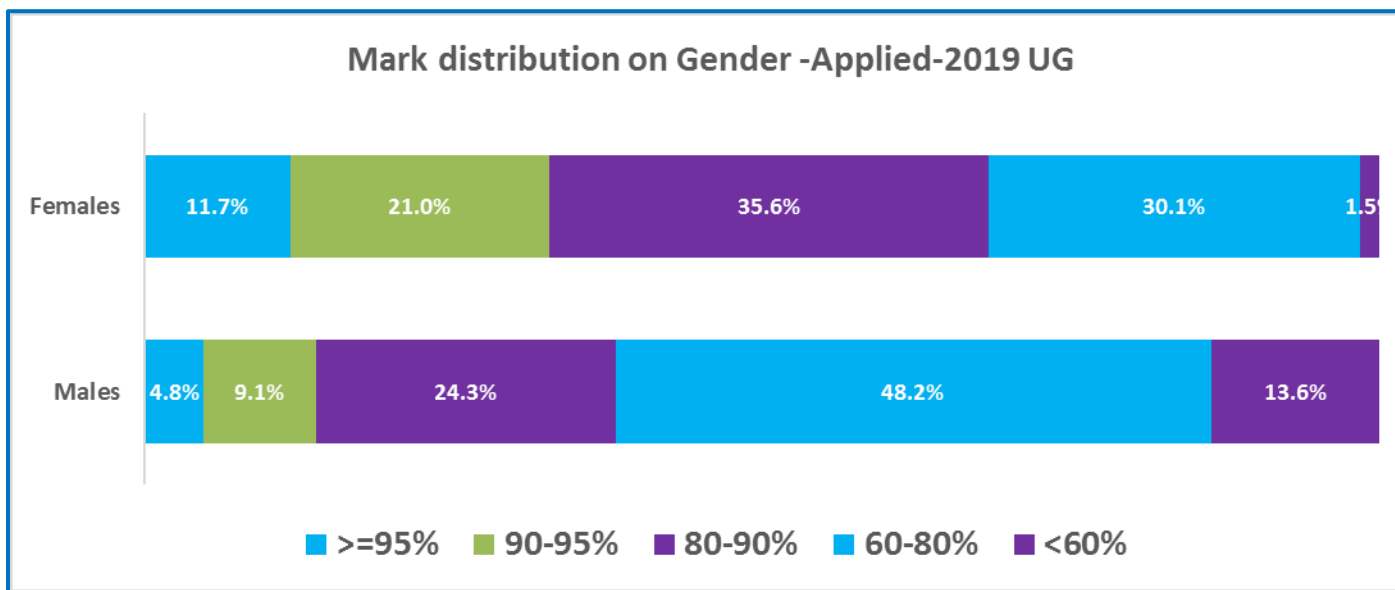
Average of percentage marks	
ETB	81.2
GENERAL	82.5
LC	79.6
OBC	76.9
OBH	80.2
OEC	78.9
SC	71.4
ST	69.4
total	80.2



Course	Average Marks (%)
B.Com	83.9
B.Com Professional-Self Financing	81.7
B.Com-Self Financing	77.4
B.Voc Food Processing Technology	75.8
B.Voc Information Technology	73.4
BA Economics	78.1
BA English & History Double main-Self Financing	73.5
BA English-Self Financing	77.0
BA Functional English	76.6
BA Malayalam-Self Financing	65.5
BBA-Self Financing	73.9
BCA-Self Financing	75.9
BPEd Integrated	64.6
BSc Catering Science & Hotel Management-Self Financing	64.5
BSc Chemistry	87.8
BSc Computer Science-Self Financing	78.5
BSc Food Technology-Self Financing	78.2
BSc Geology	82.4
BSc Geology-Self Financing	79.3
BSc Mathematics	87.9
BSc Mathematics-Self Financing	85.2
BSc Physics	89.0
BSc Physics-Self Financing	81.2
BSc Psychology-Self Financing	79.8
BSc Zoology	80.6
BSW-Self Financing	71.8

Average marks of each course (applied students UG 2019)

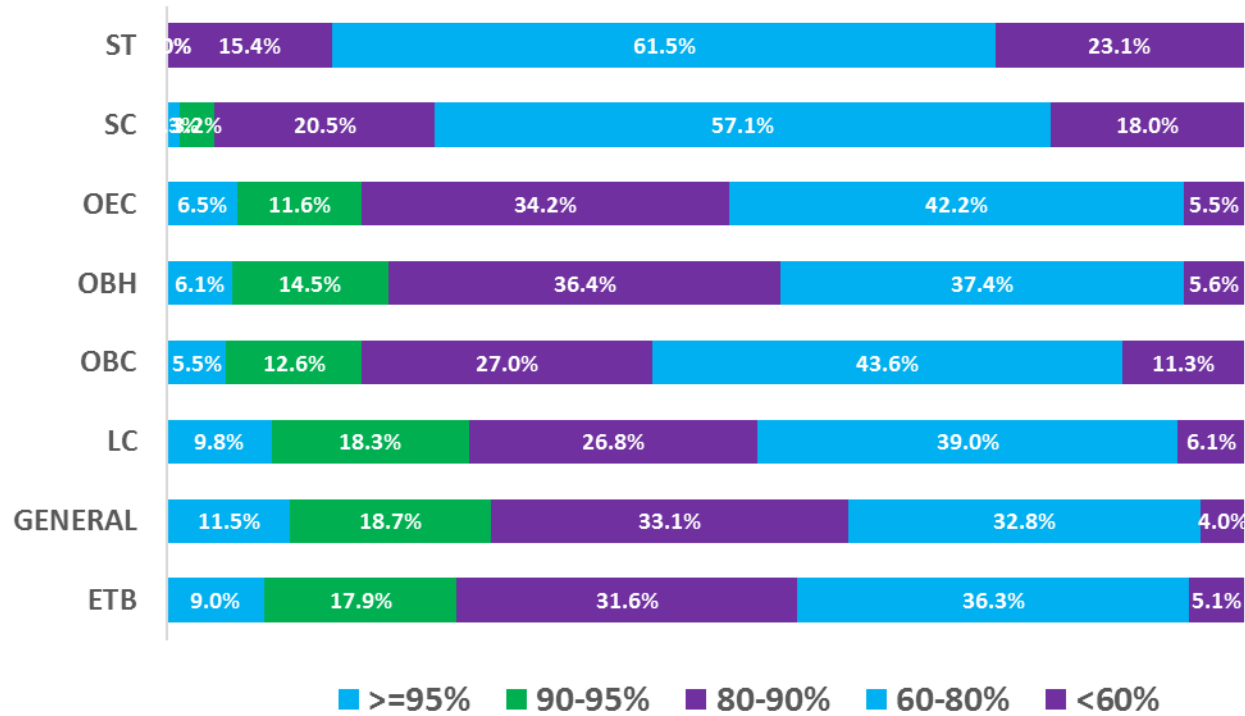




Mark distribution	Males	Females
>=95%	4.8%	11.7%
90-95%	9.1%	21.0%
80-90%	24.3%	35.6%
60-80%	48.2%	30.1%
<60%	13.6%	1.5%

MARK DISTRIBUTION WITH RESPECT TO RELIGION SECTION

Mark distribution on Category-Applied -2019 UG



Mark distribution	ETB	GENERAL	LC	OBC	OBH	OEC	SC	ST
>=95%	9.0%	11.5%	9.8%	5.5%	6.1%	6.5%	1.3%	0.0%
90-95%	17.9%	18.7%	18.3%	12.6%	14.5%	11.6%	3.2%	0.0%
80-90%	31.6%	33.1%	26.8%	27.0%	36.4%	34.2%	20.5%	15.4%
60-80%	36.3%	32.8%	39.0%	43.6%	37.4%	42.2%	57.1%	61.5%
<60%	5.1%	4.0%	6.1%	11.3%	5.6%	5.5%	18.0%	23.1%

MARK DISTRIBUTION WITH RESPECT TO COURSE

Mark Distribution- First Preference- Applied -2019 UG												
Course	Count of Students						Percentage of students					
	>=95%	90-95%	80-90%	60-80%	<60%	Grand Total	>=95%	90-95%	80-90%	60-80%	<60%	
B.Com	171	293	443	340	53	1300	13%	23%	34%	26%	4%	
B.Com Professional-Self Financing	9	13	36	34	4	96	9%	14%	38%	35%	4%	
B.Com-Self Financing	5	16	85	124	16	246	2%	7%	35%	50%	7%	
B.Voc Food Processing Technology	1	5	18	29	7	60	2%	8%	30%	48%	12%	
B.Voc Information Technology	1	0	6	25	2	34	3%	0%	18%	74%	6%	
BA Economics	18	41	76	117	29	281	6%	15%	27%	42%	10%	
BA English & History Double	4	8	21	51	16	100	4%	8%	21%	51%	16%	
BA English-Self Financing	8	8	39	78	8	141	6%	6%	28%	55%	6%	
BA Functional English	9	18	84	139	19	269	3%	7%	31%	52%	7%	
BA Malayalam-Self Financing	1	0	2	45	17	65	2%	0%	3%	69%	26%	
BBA-Self Financing	3	12	57	140	19	231	1%	5%	25%	61%	8%	
BCA-Self Financing	1	13	69	145	5	233	0%	6%	30%	62%	2%	
BPEd Integrated	0	1	31	275	159	466	0%	0%	7%	59%	34%	
BSc Catering Science & Hotel Management	1	0	6	31	20	58	2%	0%	10%	53%	35%	
BSc Chemistry	80	171	215	80	1	547	15%	31%	39%	15%	0%	
BSc Computer Science-Self Financing	3	16	56	73	7	155	2%	10%	36%	47%	5%	
BSc Food Technology-Self Financing	2	4	61	70	4	141	1%	3%	43%	50%	3%	
BSc Geology	13	43	88	81	4	229	6%	19%	38%	35%	2%	

BSc Geology-Self Financing	0	1	8	11	0	20	0%	5%	40%	55%	0%
BSc Mathematics	62	106	131	54	1	354	18%	30%	37%	15%	0%
BSc Mathematics-Self Financing	0	0	5	1	0	6	0%	0%	83%	17%	0%
BSc Physics	148	172	132	75	7	534	28%	32%	25%	14%	1%
BSc Physics-Self Financing	0	3	12	9	0	24	0%	13%	50%	38%	0%
BSc Psychology-Self Financing	10	29	104	122	5	270	4%	11%	39%	45%	2%
BSc Zoology	21	61	197	219	9	507	4%	12%	39%	43%	2%
BSW-Self Financing	2	4	27	90	21	144	1%	3%	19%	63%	15%
Grand Total	573	1038	2009	2458	433	6511	13%	23%	34%	26%	4%

DIFFERENTLY ABLED STUDENTS

Disabled applicants 2019-ug	
FEMALE	14
MALE	11
Grand Total	25

Preference of disabled students	
B.Com	7
B.Com-Self Financing	2
BA Economics	1
BA English & History Double main-Self Financing	2
BA Functional English	3
BA Malayalam-Self Financing	2
BBA-Self Financing	1
BPEd Integrated	1

BSc Chemistry	1
BSc Geology	1
BSc Mathematics	1
BSc Psychology-Self Financing	1
BSc Zoology	1
BSW-Self Financing	1
Grand Total	25

DEMAND FOR COURSES

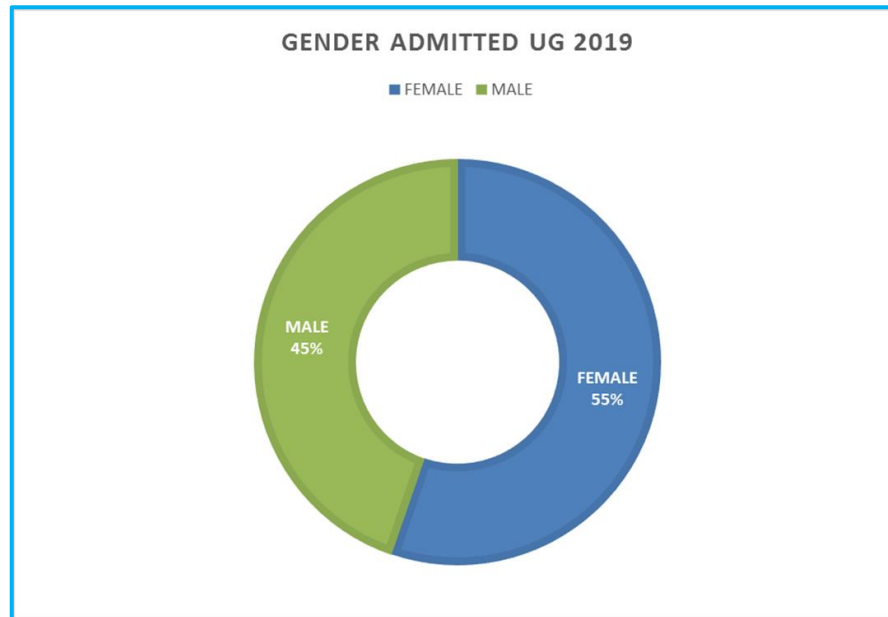
Demand of Courses			
Course	no of seats	Applicants 2019	demand 2019
B.Com	60	1300	21.7
B.Com Professional-Self Financing	40	96	2.4
B.Com-Self Financing	156	246	1.6
B.Voc Food Processing Technology	36	60	1.7
B.Voc Information Technology	36	34	0.9
BA Economics	60	281	4.7
BA English & History Double main-Self Financing	29	100	3.4
BA English-Self Financing	29	141	4.9
BA Functional English	40	269	6.7
BA Malayalam-Self Financing	40	65	1.6
BBA-Self Financing	29	231	8.0

BCA-Self Financing	29	233	8.0
BPEd Integrated	40	466	11.7
BSc Catering Science & Hotel Management-Self Financing	29	58	2.0
BSc Chemistry	48	547	11.4
BSc Computer Science-Self Financing	29	155	5.3
BSc Food Technology-Self Financing	24	141	5.9
BSc Geology	36	229	6.4
BSc Geology-Self Financing	24	20	0.8
BSc Mathematics	48	354	7.4
BSc Mathematics-Self Financing	24	6	0.3
BSc Physics	48	534	11.1
BSc Physics-Self Financing	24	24	1.0
BSc Psychology-Self Financing	48	270	5.6
BSc Zoology	36	507	14.1
BSW-Self Financing	29	144	5.0
Grand Total	1071	6511	6.1

ADMISSIONS

GENDER

Student Admitted (UG 2019)		
Females	690	55.3
Males	558	44.7
Transgender	0	0
Grand total	1248	100.00



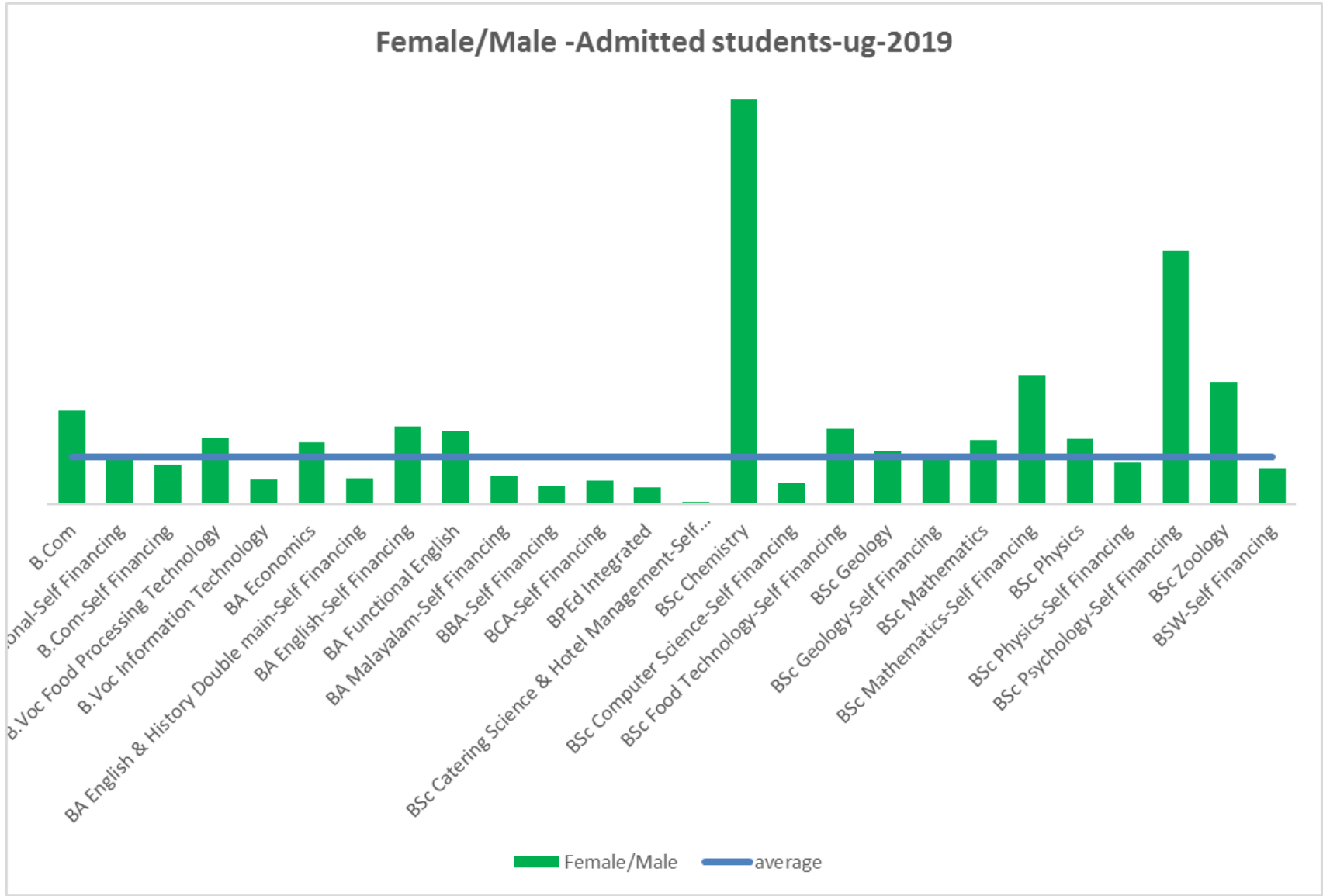
As per AISHE 2017-18 report the nation wide enrollment of female students is 47.6%. This year Christ College has a female enrollment of 55.3%.

COURSE

Course	FEMALE	MALE	Grand Total	Female/Male
B.Com	47	19	66	2.47
B.Com Professional-Self Financing	21	17	38	1.24
B.Com-Self Financing	89	86	175	1.03
B.Voc Food Processing Technology	21	12	33	1.75
B.Voc Information Technology	13	20	33	0.65
BA Economics	38	23	61	1.65
BA English & History Double main-Self Financing	22	32	54	0.69
BA English-Self Financing	33	16	49	2.06
BA Functional English	35	18	53	1.94
BA Malayalam-Self Financing	23	31	54	0.74
BBA-Self Financing	19	41	60	0.46
BCA-Self Financing	15	24	39	0.63
BPED Integrated	13	30	43	0.43
BSc Catering Science & Hotel Management-Self Financing	2	37	39	0.05
BSc Chemistry	43	4	47	10.75
BSc Computer Science-Self Financing	13	23	36	0.57
BSc Food Technology-Self Financing	16	8	24	2.00
BSc Geology	21	15	36	1.40
BSc Geology-Self Financing	13	11	24	1.18
BSc Mathematics	27	16	43	1.69
BSc Mathematics-Self Financing	17	5	22	3.40
BSc Physics	31	18	49	1.72
BSc Physics-Self Financing	12	11	23	1.09
BSc Psychology-Self Financing	54	8	62	6.75
BSc Zoology	29	9	38	3.22

BSW-Self Financing	23	24	47	0.96
Grand Total	690	558	1248	1.24

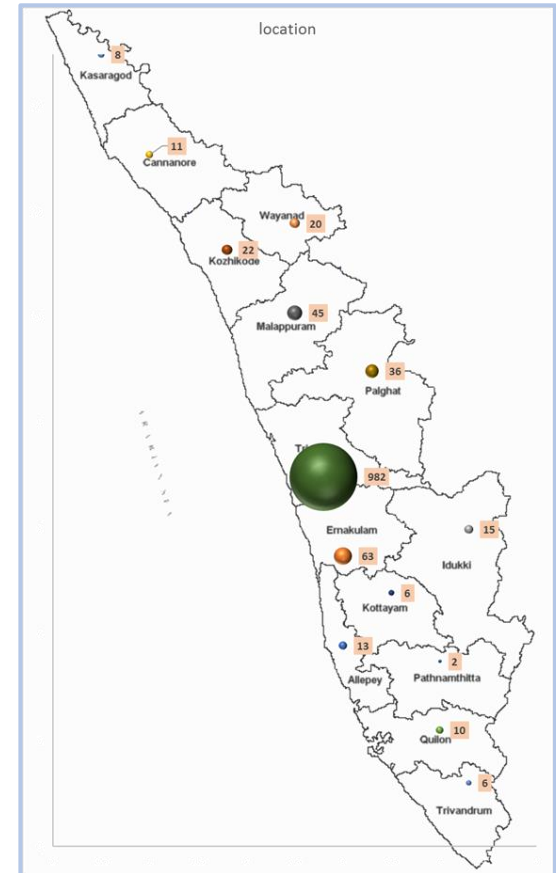
Female/Male -Admitted students-ug-2019



REGION

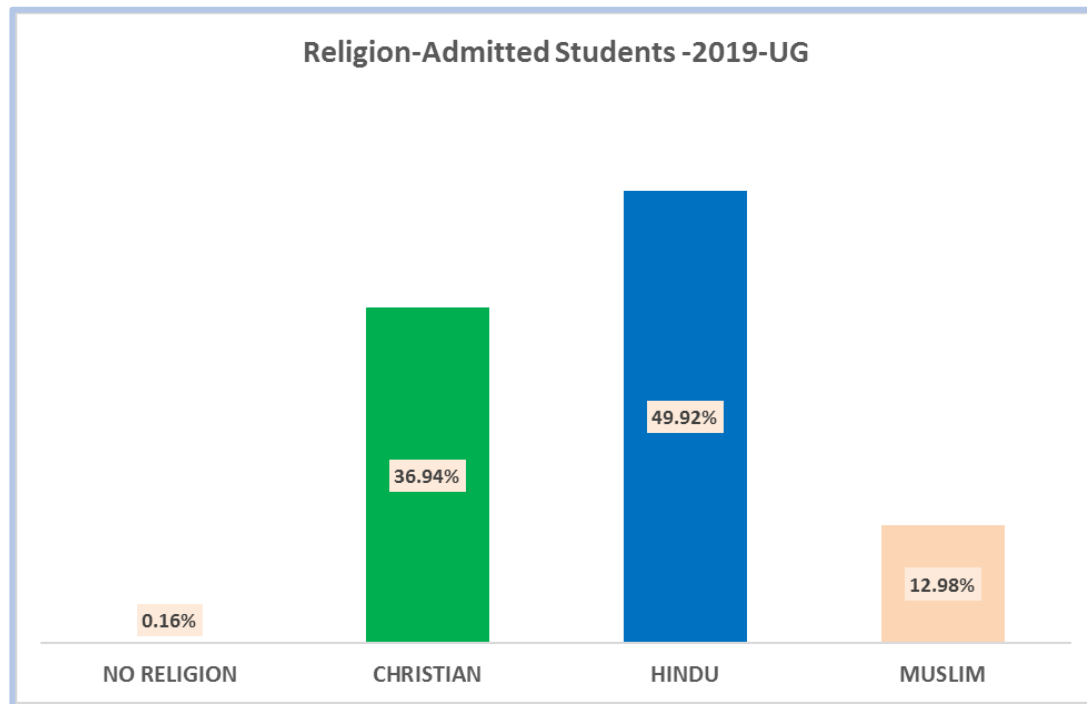
State	No of applications
Kerala	1238
Lakshadweep	8
Maharashtra	1
total	1248
One candidate admitted from other country	
i) Qatar	

District	No of applications
Alappuzha	13
Ernakulam	63
Idukki	15
Kannur	11
Kasaragod	8
Kollam	10
Kottayam	6
Kozhikode	22
Malappuram	45
Palakkad	36
Pathanamthitta	2
Thrissur	982
Trivandrum	6
Wayanad	20



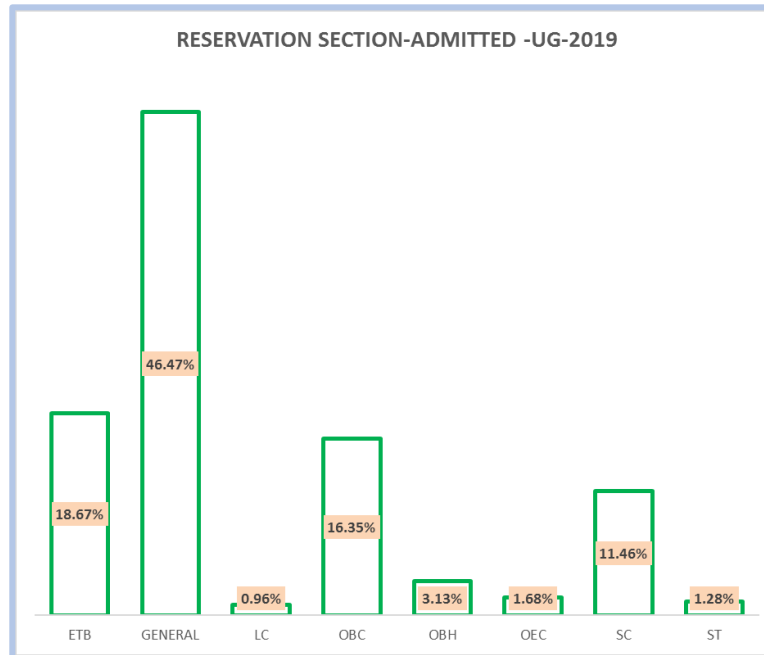
RELIGION

Admitted students (2019 UG)		
RELIGION	No	Percentage
NO RELIGION	2	0.16%
CHRISTIAN	461	36.94%
HINDU	623	49.92%
MUSLIM	162	12.98%
Grand Total	1248	100%



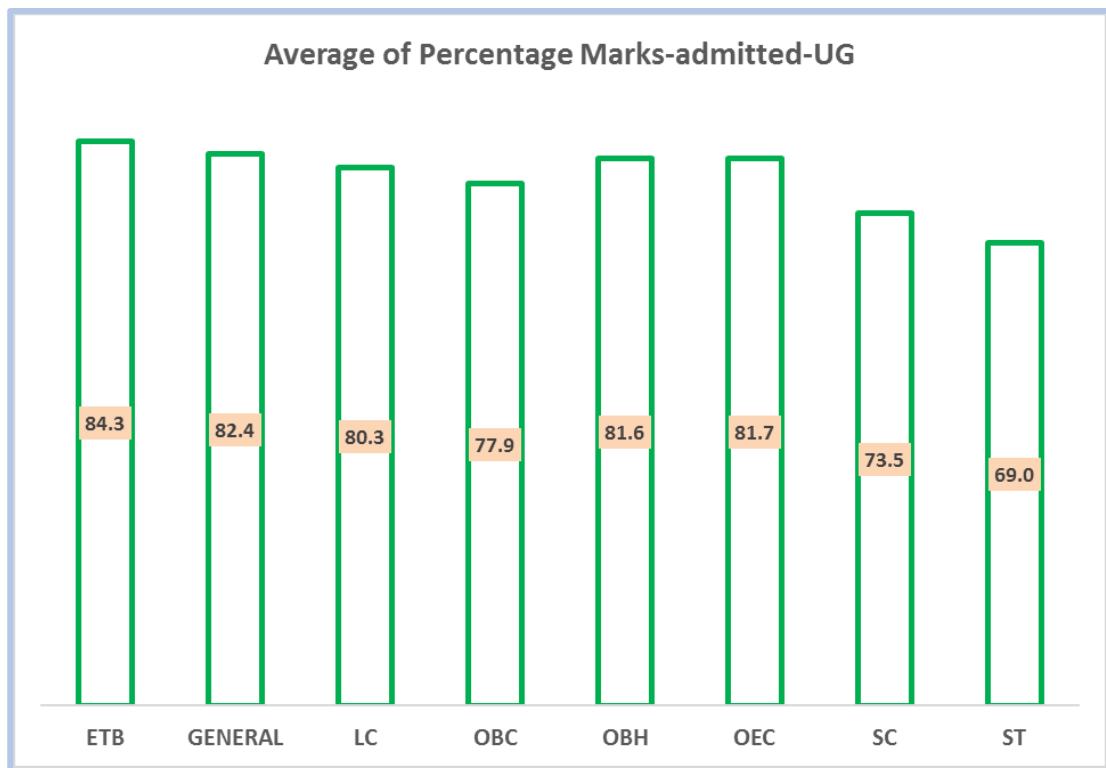
SECTION	COUNT	PERCENTAGE
ETB	233	18.67%
GENERAL	580	46.47%
LC	12	0.96%
OBC	204	16.35%
OBH	39	3.13%
OEC	21	1.68%
SC	143	11.46%
ST	16	1.28%
Grand Total	1248	100.00%

CATEGORY	CHRISTIAN	HINDU	MUSLIM	NON RELIGION	Grand Total
ETB	0	233	0	0	233
GENERAL	439	135	5	1	580
LC	12	0	0	0	12
OBC	10	44	149	1	204
OBH	0	39	0	0	39
OEC	0	21	0	0	21
SC	0	143	0	0	143
ST	0	8	8	0	16
Grand Total	461	623	162	2	1248



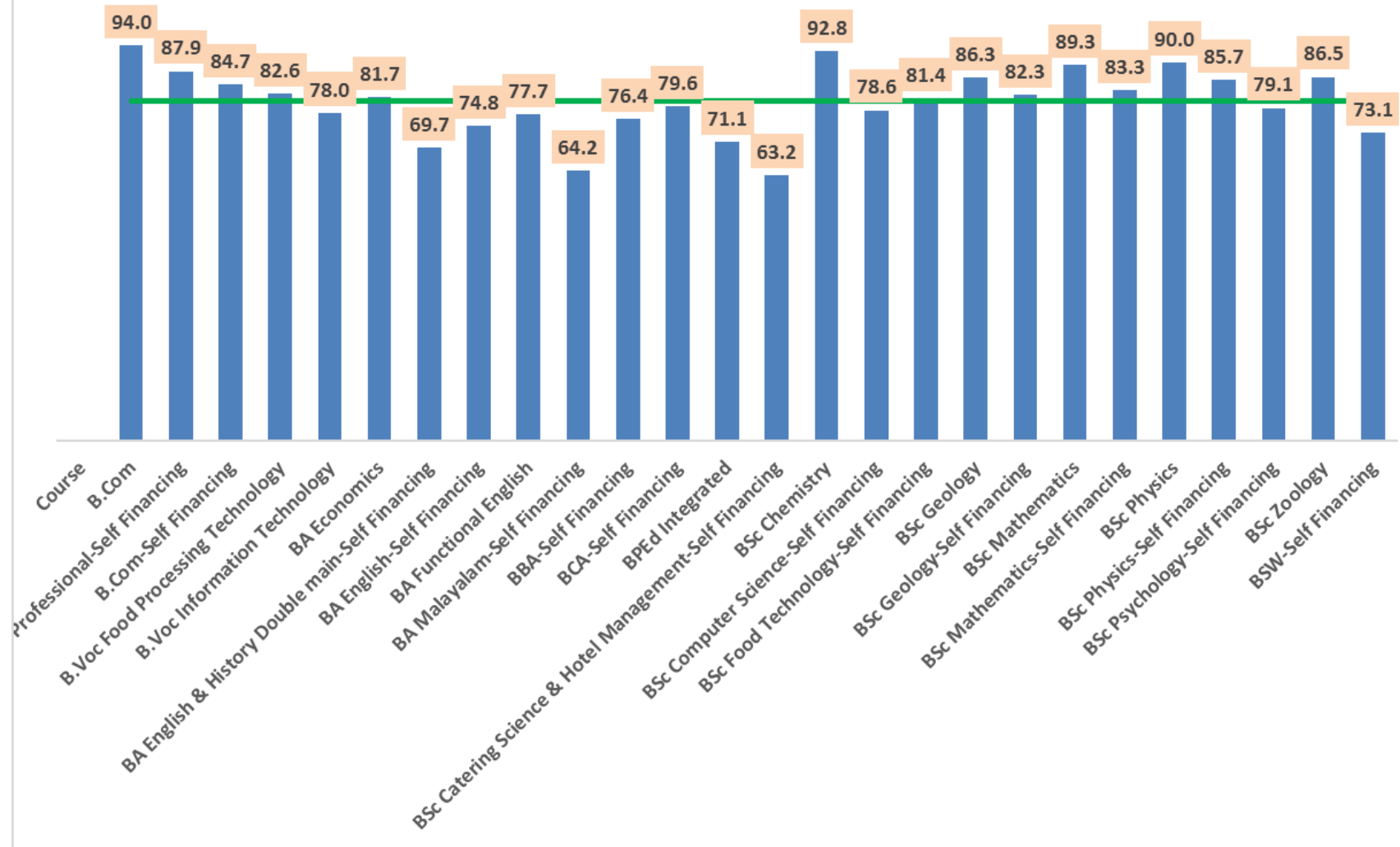
Average of percentage marks-applied- (2019 UG)	
FEMALE	85.2
MALE	75.3
Grand Total	80.8

Average of percentage marks	
ETB	84.3
GENERAL	82.4
LC	80.3
OBC	77.9
OBH	81.6
OEC	81.7
SC	73.5
ST	69.0
total	80.8

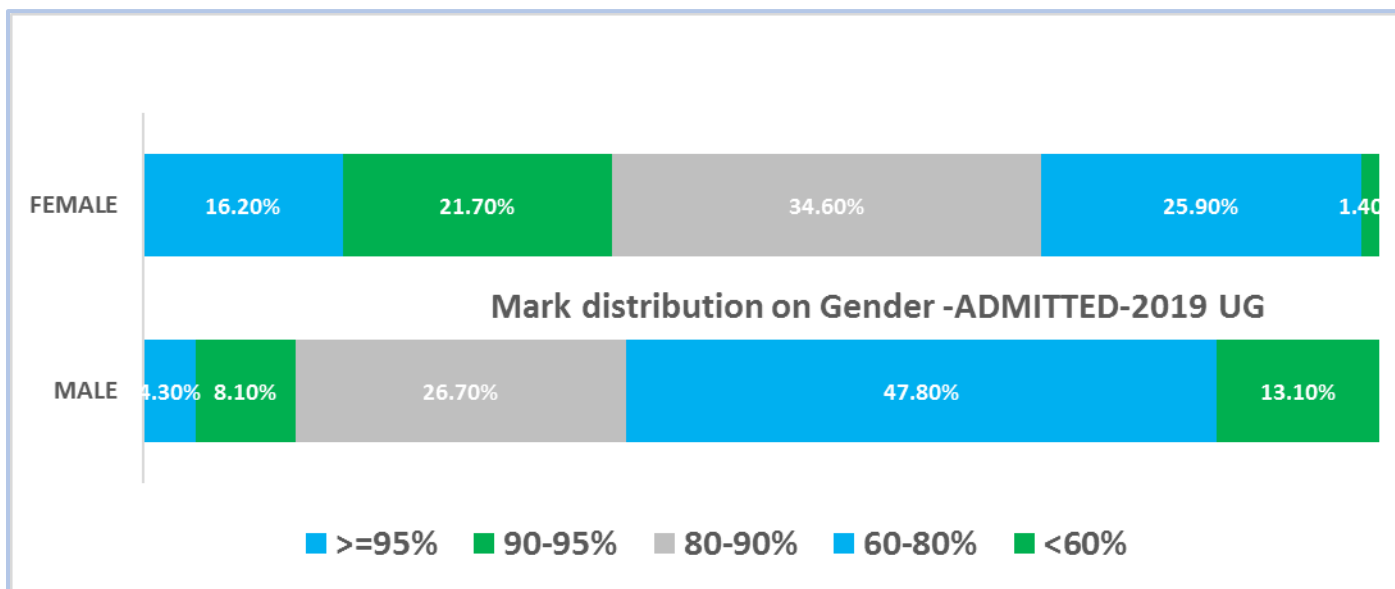


Course	Average Marks (%)
B.Com	94.0
B.Com Professional-Self Financing	87.9
B.Com-Self Financing	84.7
B.Voc Food Processing Technology	82.6
B.Voc Information Technology	78.0
BA Economics	81.7
BA English & History Double main-Self Financing	69.7
BA English-Self Financing	74.8
BA Functional English	77.7
BA Malayalam-Self Financing	64.2
BBA-Self Financing	76.4
BCA-Self Financing	79.6
BPEd Integrated	71.1
BSc Catering Science & Hotel Management-Self Financing	63.2
BSc Chemistry	92.8
BSc Computer Science-Self Financing	78.6
BSc Food Technology-Self Financing	81.4
BSc Geology	86.3
BSc Geology-Self Financing	82.3
BSc Mathematics	89.3
BSc Mathematics-Self Financing	83.3
BSc Physics	90.0
BSc Physics-Self Financing	85.7
BSc Psychology-Self Financing	79.1
BSc Zoology	86.5
BSW-Self Financing	73.1

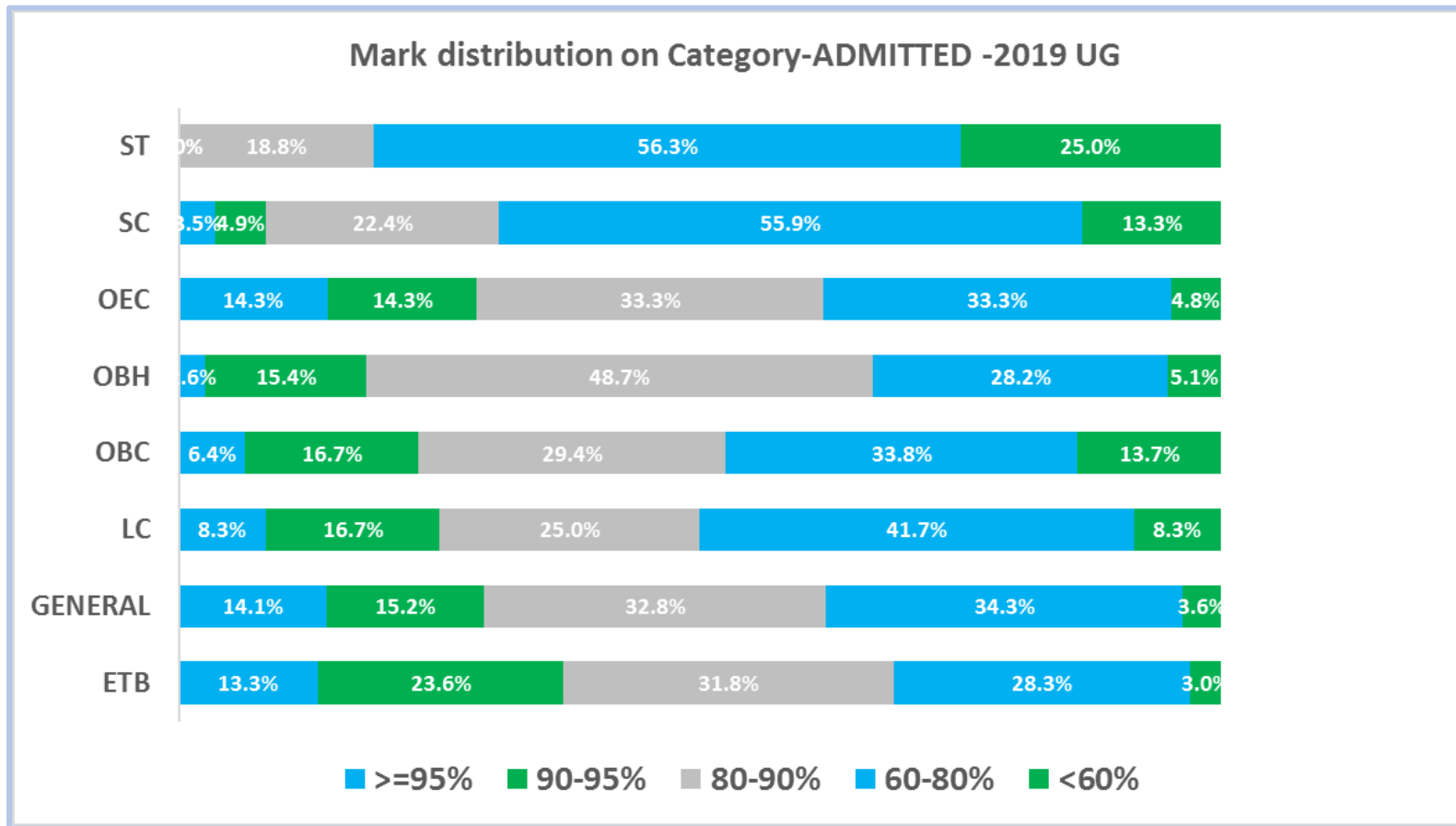
Average Percentage marks-admitted -ug-2019



Mark distribution	Males	Females
>=95%	4.3%	16.2%
90-95%	8.1%	21.7%
80-90%	26.7%	34.6%
60-80%	47.8%	25.9%
<60%	13.1%	1.4%



MARK DISTRIBUTION WITH RESPECT TO RELIGION SECTION



Mark distribution	ETB	GENERAL	LC	OBC	OBH	OEC	SC	ST	
>=95%	414	13.30%	14.14%	8.3%	6.4%	2.6%	14.3%	3.5%	0.0%
90-95%	936	23.61%	15.17%	16.7%	16.7%	15.4%	14.3%	4.9%	0.0%
80-90%	1482	31.76%	32.76%	25.0%	29.4%	48.7%	33.3%	22.4%	18.8%
60-80%	1365	28.33%	34.31%	41.7%	33.8%	28.2%	33.3%	55.9%	56.3%
<60%	79	3.00%	3.62%	8.3%	13.7%	5.1%	4.8%	13.3%	25.0%

MARK DISTRIBUTION WITH RESPECT TO COURSE

Mark distribution - Admitted students-2019-UG											
Course	Count of Students					Grand Total	Percentage of students				
	>=95%	90-95%	80-90%	60-80%	<60%		>=95%	90-95%	80-90%	60-80%	<60%
B.Com	44	7	12	2	1	66	66.7%	10.6%	18.2%	3.0%	1.5%
B.Com Professional-Self Financing	3	12	18	5	0	38	7.9%	31.6%	47.4%	13.2%	0.0%
B.Com-Self Financing	10	49	65	49	2	175	5.7%	28.0%	37.1%	28.0%	1.1%
B.Voc Food Processing Technology	2	8	13	9	1	33	6.1%	24.2%	39.4%	27.3%	3.0%
B.Voc Information Technology	1	2	14	13	3	33	3.0%	6.1%	42.4%	39.4%	9.1%
BA Economics	3	18	16	20	4	61	4.9%	29.5%	26.2%	32.8%	6.6%
BA English & History Double main-Self Financing	1		11	32	10	54	1.9%	0.0%	20.4%	59.3%	18.5%
BA English-Self Financing	2	1	10	32	4	49	4.1%	2.0%	20.4%	65.3%	8.2%
BA Functional English	1	6	20	22	4	53	1.9%	11.3%	37.7%	41.5%	7.5%
BA Malayalam-Self Financing	1	0	1	30	22	54	1.9%	0.0%	1.9%	55.6%	40.7%
BBA-Self Financing	0	4	22	31	3	60	0.0%	6.7%	36.7%	51.7%	5.0%
BCA-Self Financing	0	2	18	19	0	39	0.0%	5.1%	46.2%	48.7%	0.0%

BPEd Integrated	0	0	8	26	9	43	0.0%	0.0%	18.6%	60.5%	20.9%
BSc Catering Science & Hotel Management-Self Financing	0	0	3	22	14	39	0.0%	0.0%	7.7%	56.4%	35.9%
BSc Chemistry	24	11	11	1	0	47	51.1%	23.4%	23.4%	2.1%	0.0%
BSc Computer Science-Self Financing	0	3	18	13	2	36	0.0%	8.3%	50.0%	36.1%	5.6%
BSc Food Technology-Self Financing	0	2	12	10	0	24	0.0%	8.3%	50.0%	41.7%	0.0%
BSc Geology	4	13	10	9	0	36	11.1%	36.1%	27.8%	25.0%	0.0%
BSc Geology-Self Financing	0	5	10	9	0	24	0.0%	20.8%	41.7%	37.5%	0.0%
BSc Mathematics	12	16	8	7	0	43	27.9%	37.2%	18.6%	16.3%	0.0%
BSc Mathematics-Self Financing	0	3	13	6	0	22	0.0%	13.6%	59.1%	27.3%	0.0%
BSc Physics	22	10	9	7	1	49	44.9%	20.4%	18.4%	14.3%	2.0%
BSc Physics-Self Financing	0	7	13	3	0	23	0.0%	30.4%	56.5%	13.0%	0.0%
BSc Psychology-Self Financing	0	5	27	28	2	62	0.0%	8.1%	43.5%	45.2%	3.2%
BSc Zoology	5	9	17	7	0	38	13.2%	23.7%	44.7%	18.4%	0.0%
BSW-Self Financing	1	2	9	34	1	47	2.1%	4.3%	19.1%	72.3%	2.1%
Grand Total	136	195	388	446	83	1248	10.9%	15.6%	31.1%	35.7%	6.7%

DIFFERENTLY ABLED STUDENTS

Disabled admitted -ug-2019	
FEMALE	7
MALE	4
Grand Total	11

Disabled admitted courses	
B.Com	2
BA Economics	1
BA English & History Double main-Self Financing	1
BA Functional English	2
BA Malayalam-Self Financing	2
BSc Mathematics	1
BSc Zoology	1
BSW-Self Financing	1
Grand Total	11