

**CHRIST COLLEGE (AUTONOMOUS),
IRINJALAKUDA**



**FEEDBACK ON CURRICULAM
FEEDBACK FROM TEACHERS REPORT**

2021-22

FEEDBACK ON CURRICULAM FROM TEACHERS

REPORT

2021-22

METHODOLOGY:

Feedback on curriculum is collected from teachers through direct questionnaire method and send via google form to know the general opinions and suggestions regarding the academic quality of the syllabus they are handling. Suggestions proposed are considered seriously by the institution and necessary actions are taken. This timely analysis helps in making the curriculum updated and relevant to the current situations.

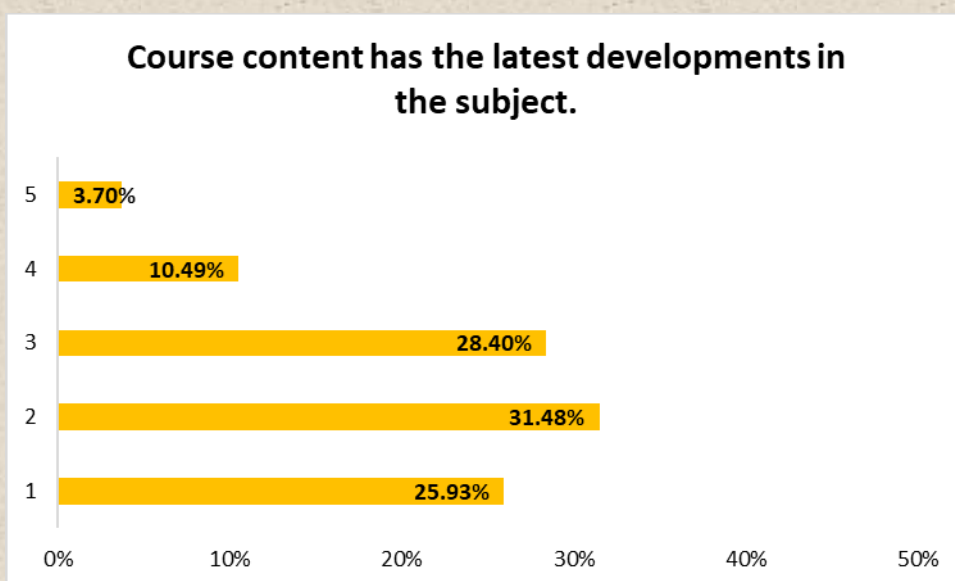
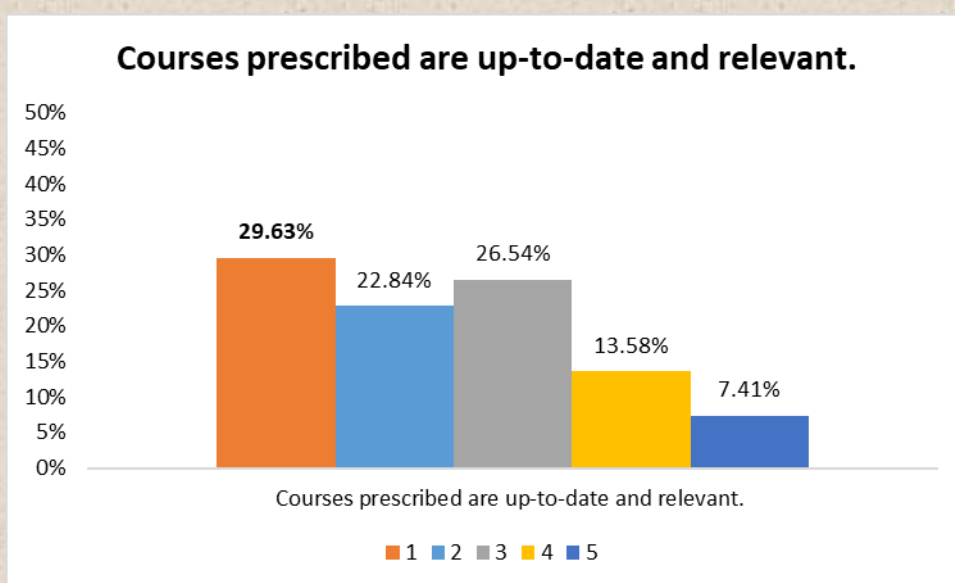
Number of respondents: 162

FEEDBACK FROM TEACHERS REPORT

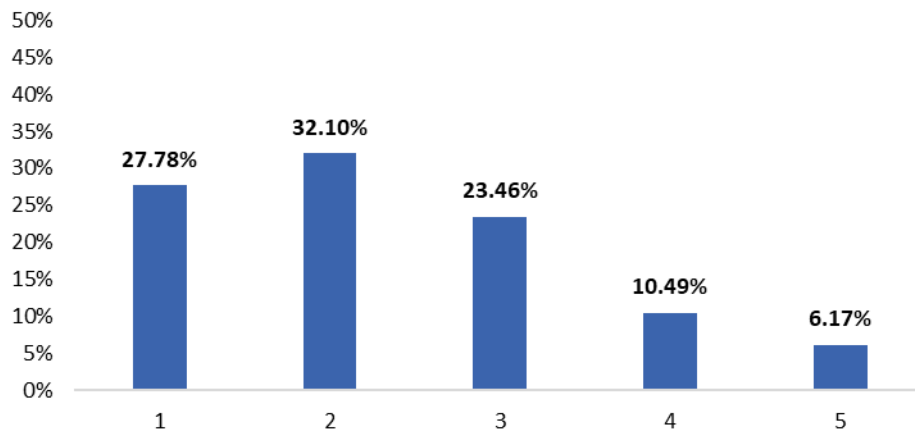
2021-22

The data is collected on a five-point Likert scale where the value 1 shows strongly agree opinion and the value 5 indicates strongly disagree opinion.

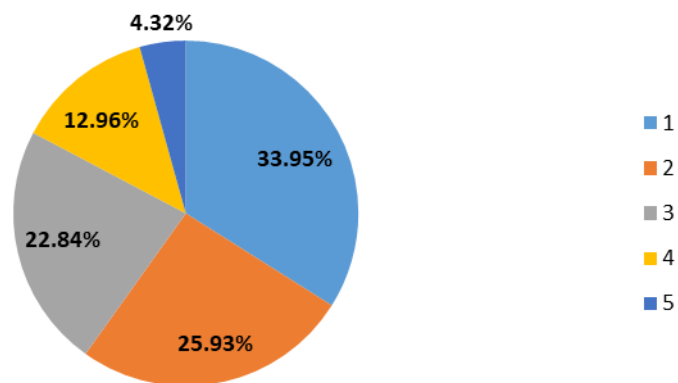
Following are the questions and opinions collected from the teachers on curriculum they are handling.



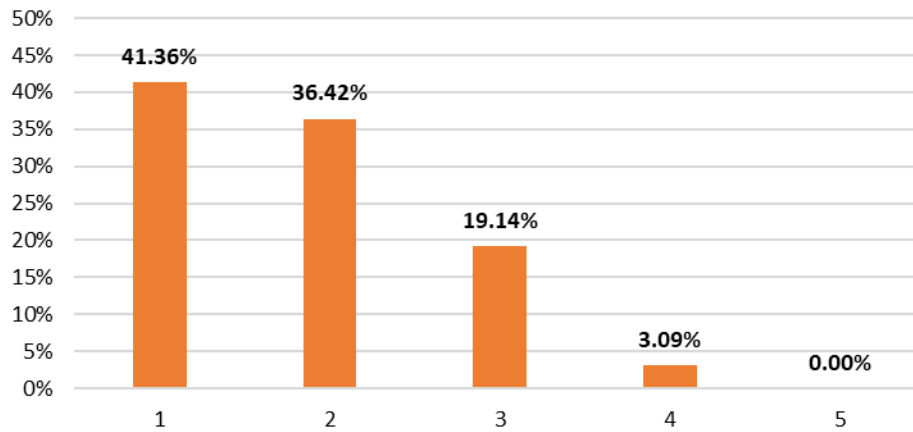
Semester wise sequencing of the courses is satisfactory.



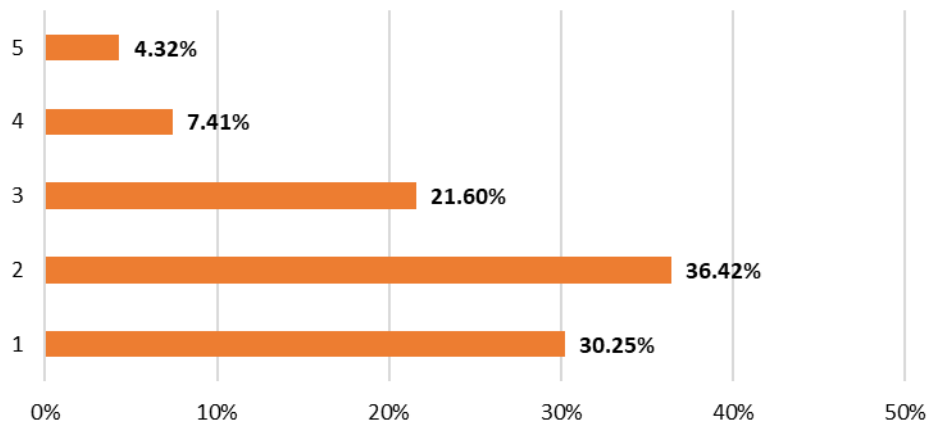
The syllabus helps students to develop a multi-disciplinary perspective.



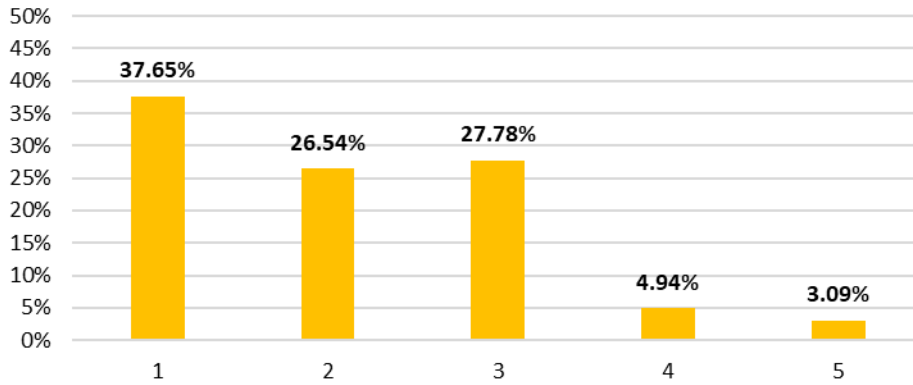
The syllabus caters to the Programme Specific Outcomes and Course Outcomes.



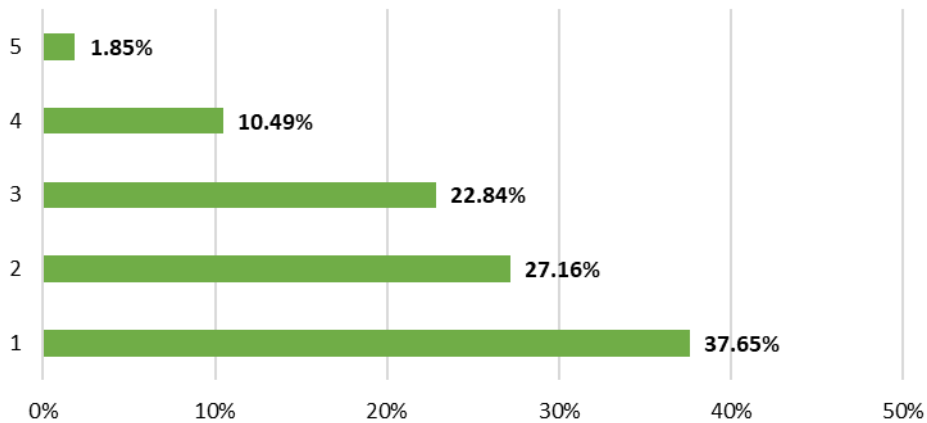
The syllabus has course components addressing local, national and global issues.



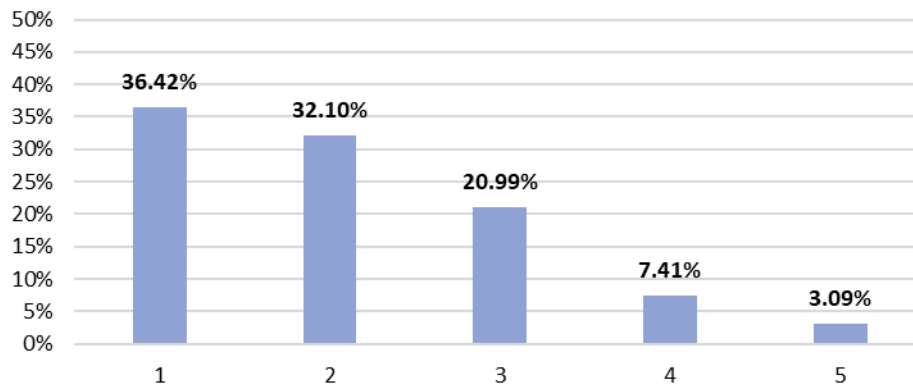
The Certificate and other Add on Courses are relevant and impart necessary soft and marketable skills.



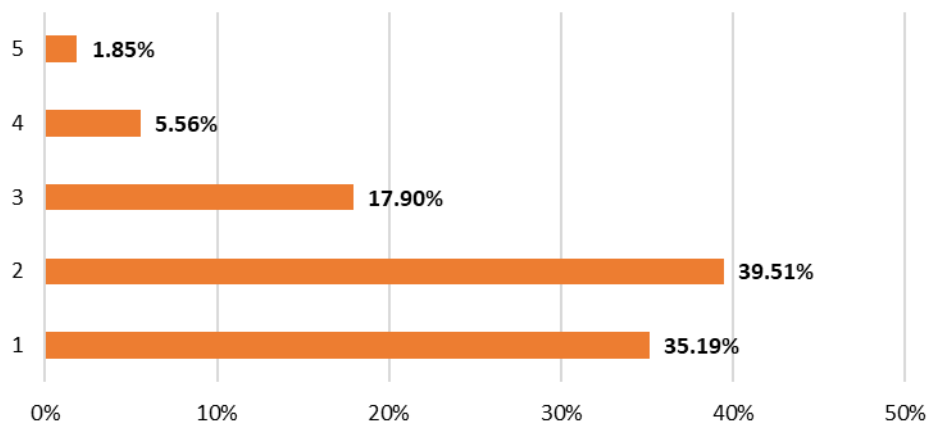
The syllabus caters to the intellectual demands of diverse learners.



The syllabus provides provision for experiential learning (Field work, Internship, OJT Industrial exposure etc.)



Complementary courses are relevant to the core Programme.



Important Suggestions from teachers

- ❖ More external exposure to students is needed – in the form of chances to explore University libraries during the conduct of research, etc.
- ❖ More practical training and experimental learning is needed
- ❖ Learning- teaching process should not be focused on rote learning, instead it should focus on grasping basic concepts and active and associative learning.
- ❖ More time to be allocated for internship.
- ❖ Need more application level syllabus
- ❖ Syllabus needs to be reviewed periodically to keep up with demands of the profession.
- ❖ Experimental learning facilities required
- ❖ Needed recent research areas in the syllabus.