



| CRITERION     | VII   | Institutional Values and Best Practices                         |
|---------------|-------|---|
| KEY INDICATOR | 7.1   | Institutional Values and Social Responsibilities                |
| METRIC        | 7.1.7 | The Institution has disabled-friendly, barrier-free environment |

## BUILT ENVIRONMENT WITH RAMPS/LIFTS FOR EASY ACCESS TO CLASSROOMS

### RAMPS

| Sl.No. | LOCATION                    | DESCRIPTION                             |
|--------|-----------------------------|---|
| 1.     | <u>ADMINISTRATIVE BLOCK</u> | Left corner of building                 |
| 2.     | <u>ST. JOSEPH'S BLOCK</u>   | Backside entry from student's centre    |
| 3.     | <u>ST. MARY'S BLOCK</u>     | From the Front                          |
| 4.     | <u>MAHATMA GANDHI BLOCK</u> | 2 Places from left side and Front       |
| 5.     | <u>MOTHER THERESA BLOCK</u> | From the Front                          |
| 6.     | <u>AUDITORIUM</u>           | Entry to auditorium and stage           |
| 7.     | <u>LIBRARY</u>              | To the left of main entrance of library |
| 8.     | <u>SNEHABHAVAN BLOCK</u>    | Left side of front                      |
| 9.     | <u>ST. SEBASTIAN BLOCK</u>  | Back side of the building               |

### LIFTS

| Sl.No. | LOCATION                    | DESCRIPTION           |
|--------|-----------------------------|-----------------------|
| 1.     | <u>ADMINISTRATIVE BLOCK</u> | Left of main entrance |



| CRITERION     | VII   | Institutional Values and Best Practices                         |
|---------------|-------|---|
| KEY INDICATOR | 7.1   | Institutional Values and Social Responsibilities                |
| METRIC        | 7.1.7 | The Institution has disabled-friendly, barrier-free environment |

## RAMPS

### ADMINISTRATIVE BLOCK





| CRITERION     | VII   | Institutional Values and Best Practices                         |
|---------------|-------|---|
| KEY INDICATOR | 7.1   | Institutional Values and Social Responsibilities                |
| METRIC        | 7.1.7 | The Institution has disabled-friendly, barrier-free environment |

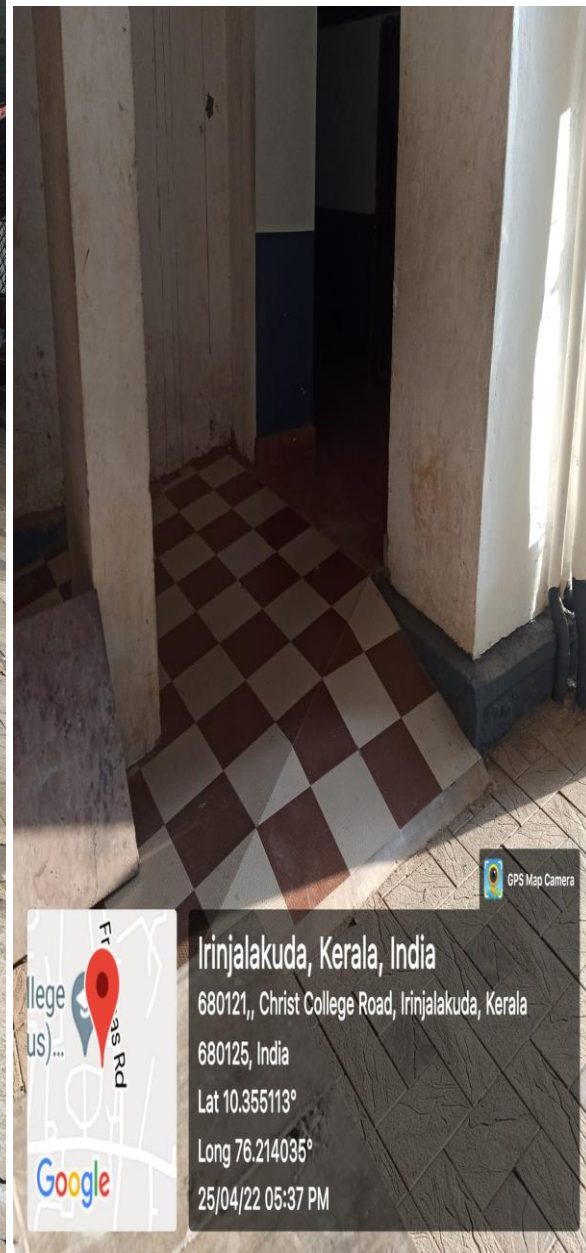
### St. JOSEPH'S BLOCK





| CRITERION     | VII   | Institutional Values and Best Practices                         |
|---------------|-------|---|
| KEY INDICATOR | 7.1   | Institutional Values and Social Responsibilities                |
| METRIC        | 7.1.7 | The Institution has disabled-friendly, barrier-free environment |

### MAHATMA GANDHI BLOCK





| CRITERION     | VII   | Institutional Values and Best Practices                         |
|---------------|-------|---|
| KEY INDICATOR | 7.1   | Institutional Values and Social Responsibilities                |
| METRIC        | 7.1.7 | The Institution has disabled-friendly, barrier-free environment |

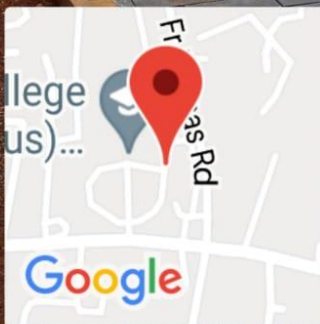
## MOTHER THERESA BLOCK





| CRITERION     | VII   | Institutional Values and Best Practices                         |
|---------------|-------|---|
| KEY INDICATOR | 7.1   | Institutional Values and Social Responsibilities                |
| METRIC        | 7.1.7 | The Institution has disabled-friendly, barrier-free environment |

## ST. MARY'S BLOCK



**Irinjalakuda, Kerala, India**

680121,, Christ College Road, Irinjalakuda, Kerala

680125, India

Lat 10.355113°

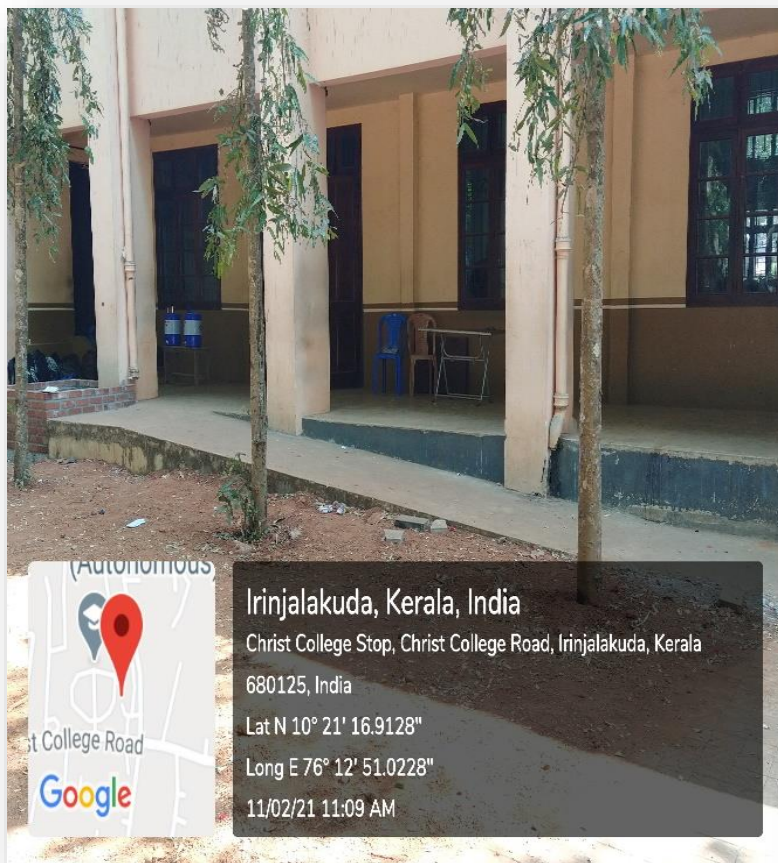
Long 76.214035°

25/04/22 05:36 PM



| CRITERION     | VII   | Institutional Values and Best Practices                         |
|---------------|-------|---|
| KEY INDICATOR | 7.1   | Institutional Values and Social Responsibilities                |
| METRIC        | 7.1.7 | The Institution has disabled-friendly, barrier-free environment |

## AUDITORIUM





| CRITERION     | VII   | Institutional Values and Best Practices                         |
|---------------|-------|---|
| KEY INDICATOR | 7.1   | Institutional Values and Social Responsibilities                |
| METRIC        | 7.1.7 | The Institution has disabled-friendly, barrier-free environment |

**LIBRARY**

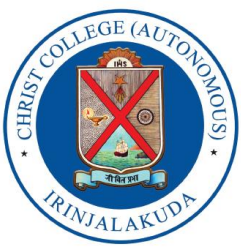


Christ College Irinjalakuda, Kerala, India  
Fr Dismas Rd, Irinjalakuda, Kerala 680125, India  
Lat N 10° 21' 20.1384"  
Long E 76° 12' 48.2436"  
11/02/21 11:27 AM



Christ College Irinjalakuda, Kerala, India  
Fr Dismas Rd, Irinjalakuda, Kerala 680125, India  
Lat N 10° 21' 20.1456"  
Long E 76° 12' 48.2652"  
11/02/21 11:27 AM





| CRITERION     | VII   | Institutional Values and Best Practices                         |
|---------------|-------|---|
| KEY INDICATOR | 7.1   | Institutional Values and Social Responsibilities                |
| METRIC        | 7.1.7 | The Institution has disabled-friendly, barrier-free environment |

### SNEHABHAVAN BLOCK





| CRITERION     | VII   | Institutional Values and Best Practices                         |
|---------------|-------|---|
| KEY INDICATOR | 7.1   | Institutional Values and Social Responsibilities                |
| METRIC        | 7.1.7 | The Institution has disabled-friendly, barrier-free environment |

## ST. SEBASTIAN BLOCK





| CRITERION     | VII   | Institutional Values and Best Practices                         |
|---------------|-------|---|
| KEY INDICATOR | 7.1   | Institutional Values and Social Responsibilities                |
| METRIC        | 7.1.7 | The Institution has disabled-friendly, barrier-free environment |

### RAMPS AND WHEELCHAIR UTILIZED BY STUDENTS





| CRITERION     | VII   | Institutional Values and Best Practices                         |
|---------------|-------|---|
| KEY INDICATOR | 7.1   | Institutional Values and Social Responsibilities                |
| METRIC        | 7.1.7 | The Institution has disabled-friendly, barrier-free environment |

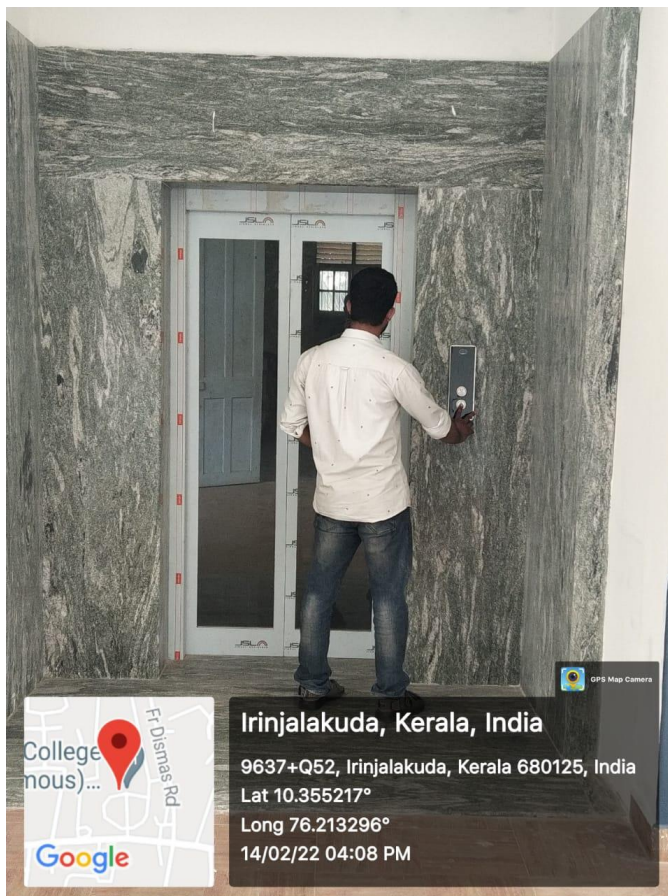




| CRITERION     | VII   | Institutional Values and Best Practices                         |
|---------------|-------|---|
| KEY INDICATOR | 7.1   | Institutional Values and Social Responsibilities                |
| METRIC        | 7.1.7 | The Institution has disabled-friendly, barrier-free environment |

## LIFTS

### ADMINISTRATIVE BLOCK



**PRINCIPAL**

**Fr. Dr. Jolly Andrews**  
Assistant Professor-  
In-charge of Principal  
Christ College (Autonomous)  
Irinjalakuda

